



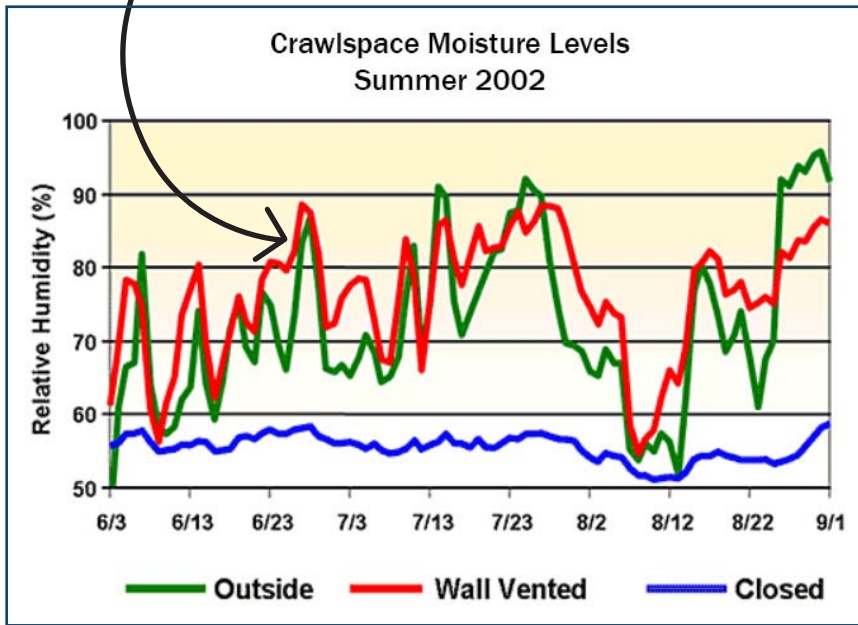
Stetten Home Services
fix it. keep it.

The following guide will help you better understand the value of a sealed crawlspace and see the quality of our work.

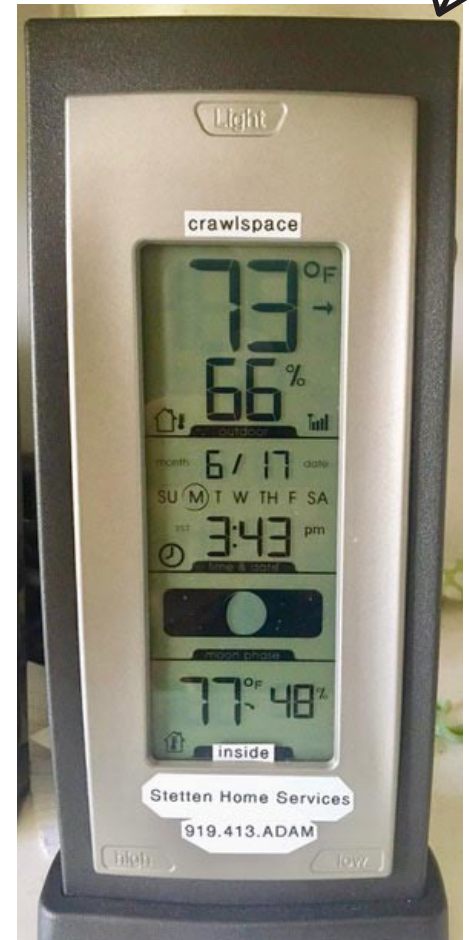
We look forward to working with you!

Stetten Home Services Energyhandyman.com 919-413-2326

This is why we SHOULDN'T vent crawlspaces



We install a [temp & RH% humidity] sensor in the crawlspace linked to this device, which also shows your indoor conditions



We provide copies of this chart so that you can better understand your humidity levels

www.EnergyHandyman.com

Temperature @ 60F						
T	RH	DP	PI	Days to Mold	EMC	
60.8°F	72%	52°F	40	No Risk	13.8%	
60.8°F	73%	52°F	39	71	14%	
60.8°F	74%	52°F	38	54	14.3%	
60.8°F	75%	53°F	37	42	14.6%	
60.8°F	76%	53°F	36	33	14.9%	
60.8°F	77%	53°F	35	26	15.2%	
60.8°F	79%	54°F	33	18	15.8%	
60.8°F	80%	55°F	32	15	16.2%	
60.8°F	82%	55°F	31	11	16.9%	
60.8°F	85%	56°F	28	7	18.2%	
60.8°F	89%	58°F	26	5	20.1%	
60.8°F	95%	59°F	22	3	24.1%	

Temperature @ 65F						
T	RH	DP	PI	Days to Mold	EMC	
65°F	70%	54°F	33	No Risk	13.2%	
65°F	71%	55°F	32	123	13.4%	
65°F	72%	55°F	31	90	13.7%	
65°F	73%	55°F	30	67	14.2%	
65°F	74%	56°F	30	51	14.8%	
65°F	76%	57°F	28	31	15.4%	
65°F	78%	57°F	27	21	16.1%	
65°F	80%	58°F	25	14	17.2%	
65°F	85%	59°F	24	8	20.8%	

Temperature @ 70F						
T	RH	DP	PI	Days to Mold	EMC	
70°F	66%	58°F	25	No Risk	12.2%	
70°F	68%	59°F	24	340	12.6%	
70°F	69%	59°F	24	232	12.9%	
70°F	70%	60°F	23	163	13.1%	
70°F	71%	60°F	22	117	13.3%	
70°F	72%	60°F	22	86	13.6%	
70°F	74%	61°F	21	49	14.1%	
70°F	76%	62°F	20	30	14.7%	
70°F	78%	63°F	19	19	15.3%	
70°F	80%	63°F	18	13	16%	
70°F	83%	64°F	17	8	17.1%	
70°F	85%	65°F	16	6	18%	
70°F	91%	67°F	14	3	21.1%	

Temperature @ 75F						
T	RH	DP	PI	Days to Mold	EMC	
75°F	65%	63°F	18	No Risk	11.9%	
75°F	67%	63°F	17	493	12.2%	
75°F	69%	64°F	17	340	12.6%	
75°F	71%	64°F	17	232	12.9%	
75°F	72%	64°F	17	163	13.1%	
75°F	74%	65°F	16	117	13.3%	
75°F	76%	65°F	16	86	13.6%	
75°F	78%	66°F	15	49	14.1%	
75°F	80%	66°F	15	30	14.7%	
75°F	83%	67°F	14	19	15.3%	
75°F	85%	67°F	14	13	16%	
75°F	91%	69°F	12	8	17.1%	
75°F	95%	71°F	10	6	18%	

Temperature @ 80F						
T	RH	DP	PI	Days to Mold	EMC	
80°F	65%	68°F	13	No Risk	11.7%	
80°F	67%	69°F	12	483	12.2%	
80°F	69%	69°F	12	220	12.6%	
80°F	71%	70°F	11	61	13.1%	
80°F	73%	71°F	11	220	13.3%	
80°F	75%	72°F	10	61	13.6%	
80°F	79%	73°F	9	15	14.1%	
80°F	81%	74°F	9	11	14.7%	
80°F	84%	75°F	8	7	15.3%	
80°F	91%	78°F	7	3	17.2%	



Door Gasket, door insulation, and door entry padding complete. Nobody seals it better than SHS!

Sensor installed here (close to the floor joists), flagged so it can easily be found. Detailed signage includes labels, humidity chart with all devices flagged, and SHS contact information

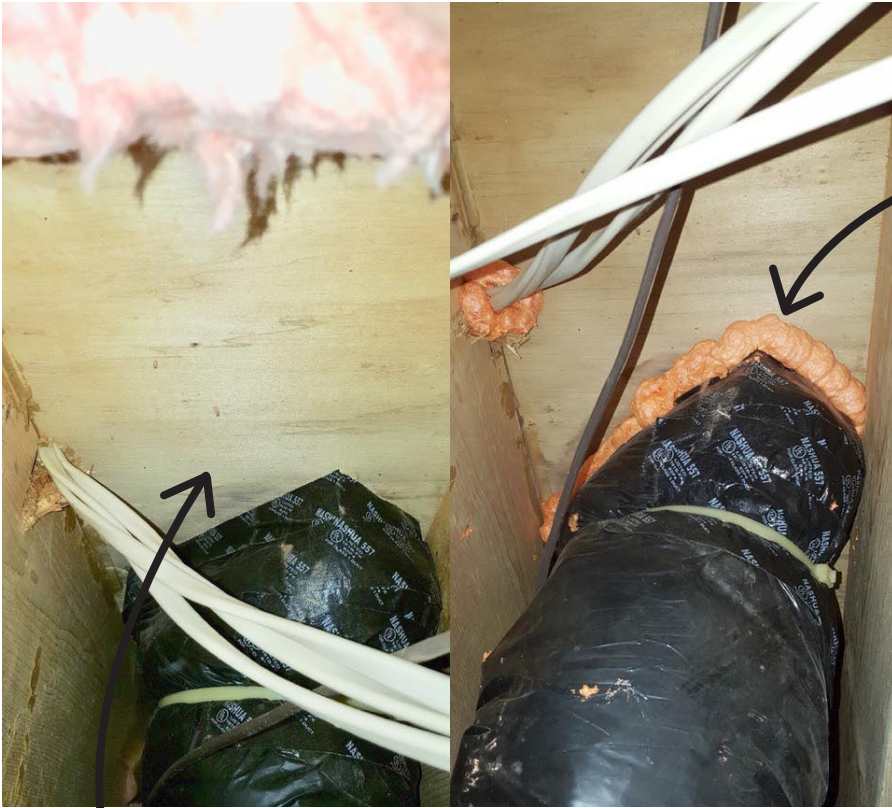




Adjustable supply-air drying mechanism added to existing duct work to bring conditioned air into the space

Duct work and wiring lifted for added visibility, cleanliness, and ease to move around





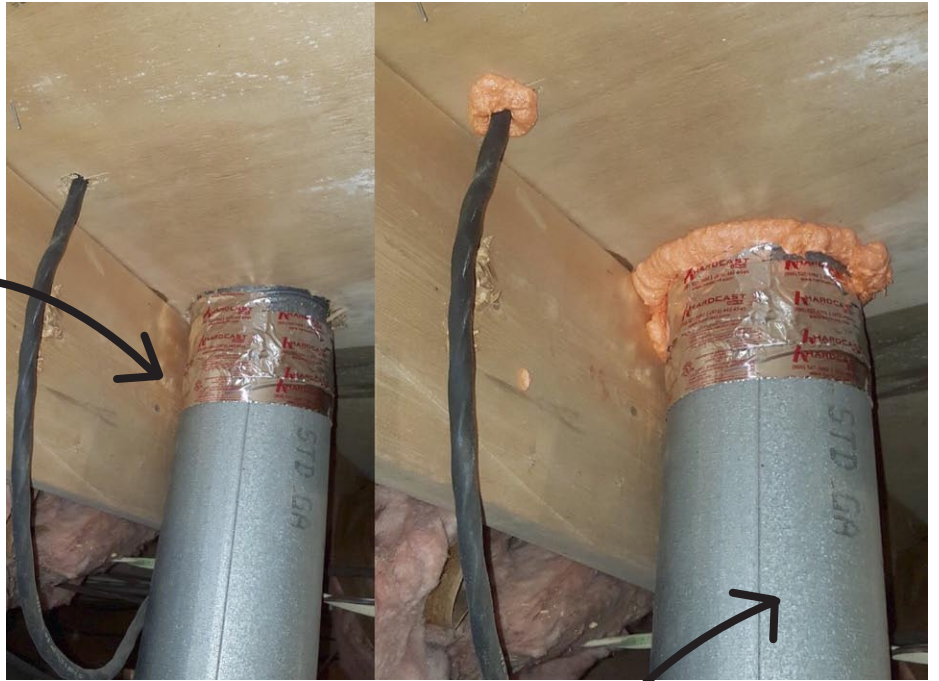
Before

After - cleaned up insulation and wiring, sealed where duct and wiring penetrate floor

After - Added insulated Air Barrier to cover hole and sealing around penetrations (all wires, pipes, and ducts)



Before



After, showing all penetrations sealed





Complete crawlspace, ducts lifted, heavy duty vapor barrier laid down, nailed and adhered throughout crawlspace



Crawlspace built since 1993 should have a "LOW-POINT-DRAIN"

Here we have placed stone, under our heavy plastic screening, to finish the vapor barrier.

This allows for drainage and discourages pests





Examples of sealed
crawlspace before
new insulation has
been installed



When adding new
insulation we use
EcoBatt, R-19
Insulation which is
formaldehyde
free



We need to know if you have any access impediments!



Examples of access impediments are:

- a tiny door
- access under deck or bay window
- obstructive ductwork
- etc.

We look forward to reducing your energy bills and getting your home running efficiently! We are happy to help, please reach out with any questions that you might have.

Refer back to your proposal document for details on work provided as well as links to more information on our website

